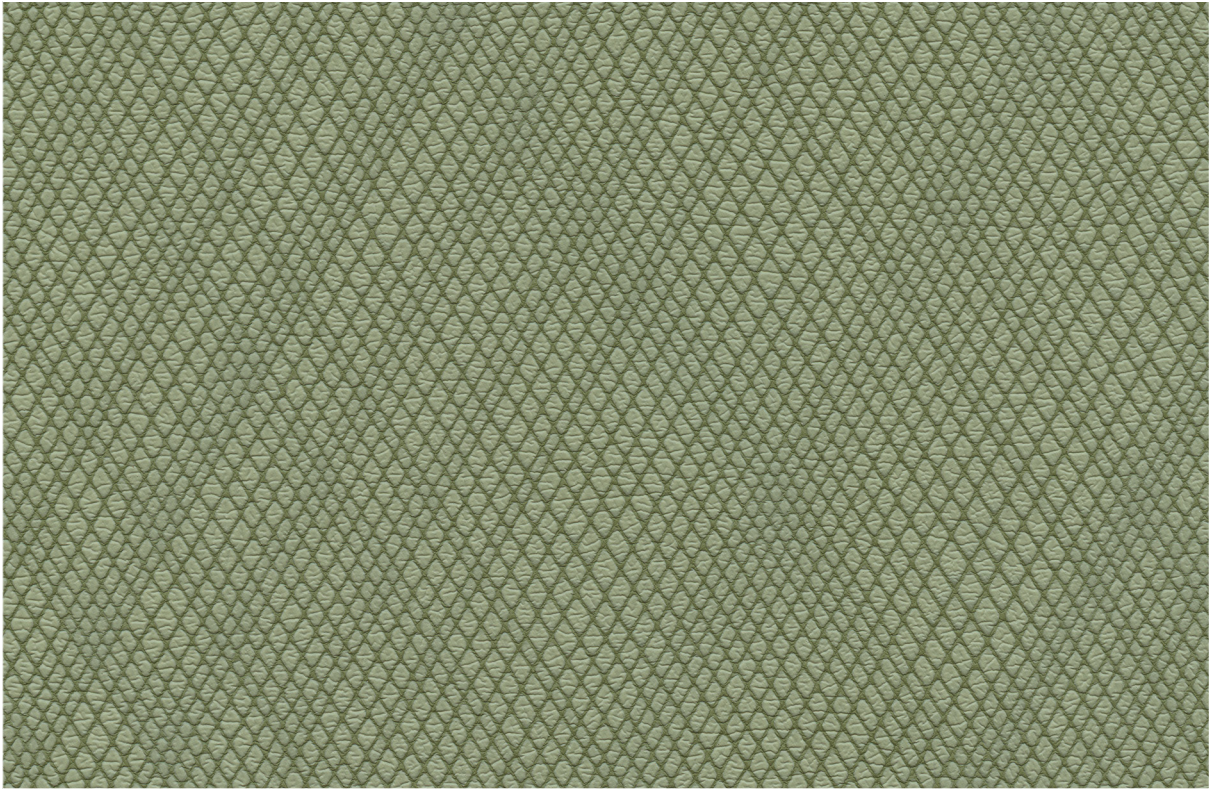




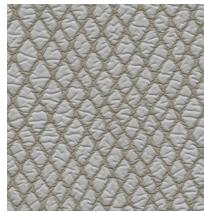
# Ultratech® | Wired



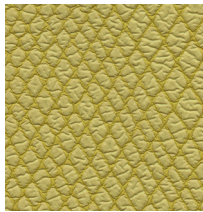
531-4306 Rio



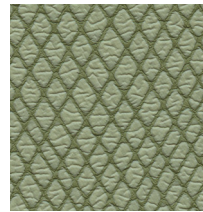
531-3282 Milkshake



531-3283 Butter Cookie



531-5266 Lemon Drop



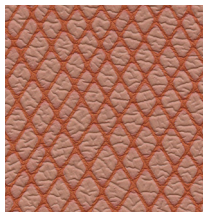
531-4306 Rio



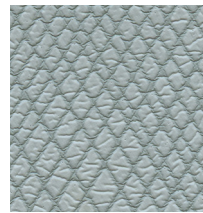
531-6563 Dust



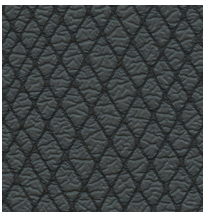
531-3284 Sugar Cone



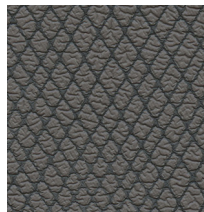
531-8236 Marmalade



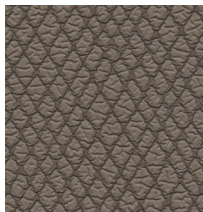
531-2591 Baby Blue



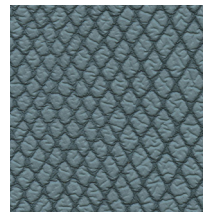
531-9421 Blackjack



531-9326 Acai



531-3285 Kahlua



531-2592 Aquarius

# Ultratech® | Wired

---

## General Specifications

### Composition:

100% Polycarbonate Polyurethane Surface  
65% Polyester, 35% Rayon Backing

### Weight:

Approx. 10.3 oz. Per Square Yard  
Approx. 350 Grams Per Square Metre

### Thickness:

Approx. 1.1 Millimetres

### Width:

54 Inches / 137 Centimetres

### Repeat:

27.55"V x 16.61"H / 700mm V x 422mm H

## Performance

### Abrasion:

ASTM D4157 / 400,000 Double Rubs (Wyzenbeek)\*  
BS EN ISO 12947-2 / 200,000 Rubs (Martindale)\*  
\*meets or exceeds

### Hydrolysis:

14+ Weeks  
ASTM D3690 Sect. 6.11 (Hydrolytic Stability)  
ISO 1419 Method C (Accelerated Ageing)

Adhesion of Coating: ASTM D751

Tear Strength: ASTM D2261

Breaking Strength: ASTM D5034

Tensile Strength: BS EN ISO 1421

## Colorfastness

### Light Fastness:

AATCC 16.3, 200 Hours, Grade 4  
ISO 105 B02, Grade 6

### Crocking:

AATCC 8, Grade 4-5 Wet & Dry

## Flammability Requirements

- ASTM E84 (Adhered) - Class A
- CA TB 117 - Pass
- FMVSS 302 & 95/28 Annex IV - Pass
- NFPA 260 - Class 1
- UFAC - Class 1

These fabrics, when treated and/or used with other compatible furniture components, have been shown to perform under the fire test conditions of:

- ASTM E84 (Unadhered)
- BS 5852 Source O, 1 & 5 (Cig, Match & Crib 5)
- BS 5867 Part 2 Type B
- BS 7175
- FAR Specifications
- IMO Part 8
- NFPA 701

## Health Care Without Harm

Meets Health Care Without Harm's Healthy Interiors Criteria V2.3

For more information on certifications and standards, sustainability, as well as cleaning and care instructions, please visit our website.

