
sta*kleen™

the erasable urethane

knú
CONTRACT

L A **Z** B O Y[®]
CONTRACT FURNITURE

carded fabric program

Payson



payson | cream



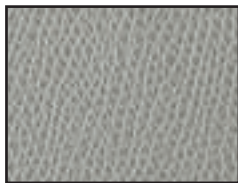
payson | taupe



payson | mint



payson | brown sugar



payson | dove



payson | pavement



payson | chocolate



payson | almond



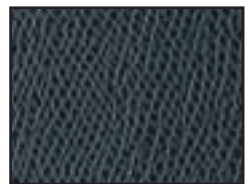
payson | truffle



payson | merlot

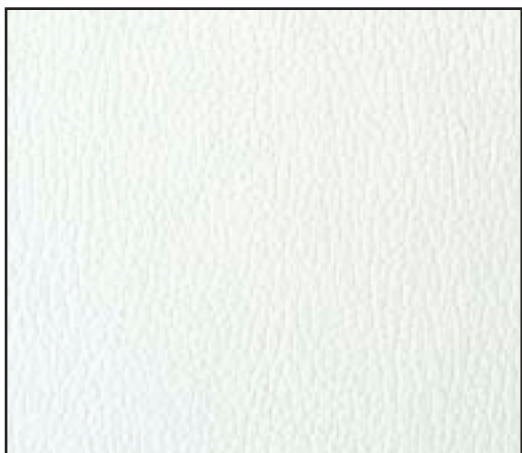


payson | patriot

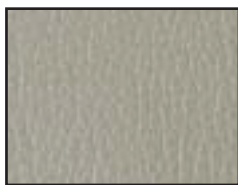


payson | cadet

Hudson



hudson | abite



hudson | ash



hudson | fathom



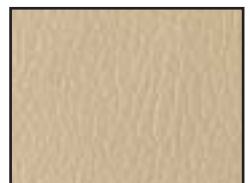
hudson | black



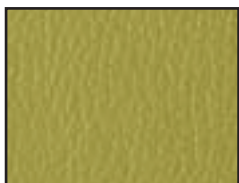
hudson | chocolate



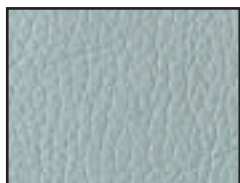
hudson | brown



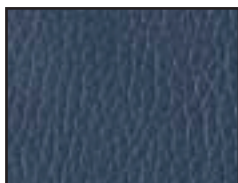
hudson | bagel



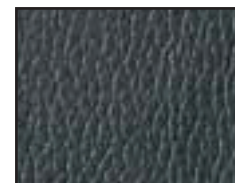
hudson | avocado



hudson | sea mist



hudson | blueberry



hudson | juicebox



hudson | aubergine

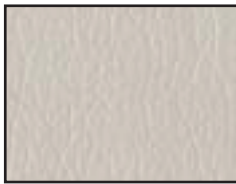
Soleil



soleil | cream



soleil | mystic



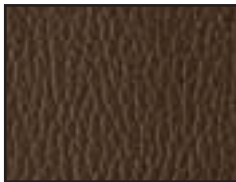
soleil | light grey



soleil | grey



soleil | black



soleil | brown



soleil | golden brown



soleil | cork



soleil | tangerine



soleil | geranium



soleil | olive

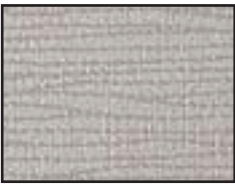


soleil | navy

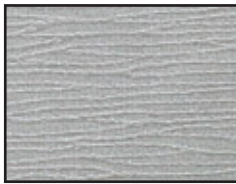
Congo



congo | snow



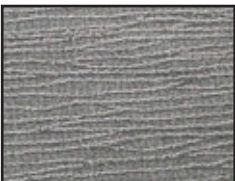
congo | mist



congo | pavement



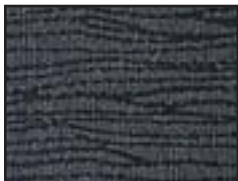
congo | granite



congo | shield



congo | smoke



congo | slate



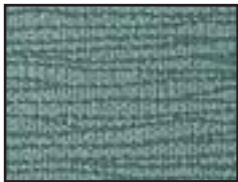
congo | birch



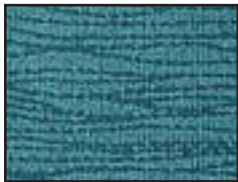
congo | sage



congo | lichen



congo | aqua



congo | ocean



Sta*Kleen is the first polyurethane performance fabric that enables complete erasing of marks and stains that would permanently damage other furniture upholstery. This includes, but is not limited to, permanent marker, ballpoint pen, yellow mustard, blue jean dye, and Betadine. Sta*Kleen's unique cleanability feature is a permanent part of the upholstery and will not wear out, thus protecting the furniture for as long as it lasts. Repeated and regular cleanings will not damage or diminish the cleanability of the surface, which is highly abrasion-resistant.

Pattern	Content	Width/ Weight	Flammability*	Abrasion Resistance (Wyzenbeek)	Light Fastness	Crock Resistance	Hydrolysis Resistance	Seam Strength
Hudson	100% PU PVC Free	54" 21 oz/yd	IMO A.652 (16) 8.2 CA 117 - 2013 UFAC Class 1 NFPA 260	100,000 DR	150 Hours Grade 4 ASTM D4329-05	Dry-4; Wet-4 AATCC 8-2013	10 Weeks ISO 1419: 1995	Warp: 40 lbs/min Fill: 40 lbs/min (ASTM D 751-06)
Payson	100% PU PVC Free	54" 21 oz/yd	IMO A.652 (16) 8.2 CA 117 - 2013 UFAC Class 1 NFPA 260	100,000 DR	150 Hours Grade 4 ASTM D4329-05	Dry-4; Wet-4 AATCC 8-2013	10 Weeks ISO 149: 1995 E	Warp: 40 lbs/min Fill: 40 lbs/min (ASTM D 751-06)
Soleil	100% PU	54" 21.2 oz/yd	IMO A.652 (16) 8.2 CA 117 - 2013 UFAC Class 1 NFPA 260	300,000 DR	1,000 Hours Grade 5 AATCC 16-2004	Dry-4; Wet-4	5 Weeks ASTM D 3690-02	Warp: 40 lbs/min Fill: 40 lbs/min (ASTM D 1683-07A)
Congo	100% PU	54" 22 oz/yd	IMO A.652 (16) 8.2 CA 117 - 2013 UFAC Class 1 NFPA 260	300,000 DR	150 Hours Grade 5 ASTM D 4329-05	Dry-4; Wet-4	7 Weeks ISO 12419: 1995 E	Warp: 35 lbs/min Fill: 35 lbs/min (ASTM D 1683-07A)

*This term and any corresponding data refer to typical performance in the tests indicated and should not be construed to imply the behavior of this or any other material under actual fire conditions.

Care and Maintenance

Day-to-Day Cleaning - Remove ordinary dirt and smudges with mild soap and water. Dry with a soft, lint-free cloth or towel. The use of conditioners or protectants is not required nor recommended for use on Sta*Kleen upholstery - its cleanability is permanent and won't wear out.

Disinfecting - A 5:1 ratio of water to bleach solution may be used as a disinfectant. Rinse the surface with clean water after disinfecting. Dry with a soft, lint-free cloth or towel.

Stain Removal - Upholstery protected with Sta*Kleen is resistant to most common stains. To keep your furniture looking new, stains such as ballpoint pen can be dry-erased with a clean lint-free cloth. Gently rub the area until the stain has been removed. Wet or gooey stains such as food stains (e.g., ketchup) or topical stains (e.g., antiseptics, lotions and creams) should first be wiped off with a clean cloth or sponge, then follow the instructions above.

Stubborn Stains - If a ghost stain remains, apply a small amount of household rubbing alcohol (91% isopropyl alcohol) to a clean, lint-free cloth and rub the stain until it has been removed. Rinse with a clean, damp cloth and go!

Blue Jean Dye Resistance - Sta*Kleen creates an invisible barrier to keep the indigo dye from transferring to the upholstery. However, as there are many types of both natural and synthetic dyes used in coloring clothing, we cannot guarantee there will never be any dye transfer. In the unlikely event that any blue jean dye transfer occurs, follow the Stubborn Stains cleaning instructions above.

Dye lots may vary from samples shown.

Country of Origin: China

Intro: 7/2017