



Ultraleather® | Pony



370-5647 Dapple



370-3895 Marengo



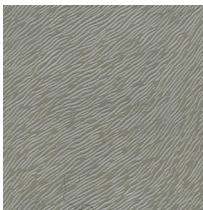
370-5647 Dapple



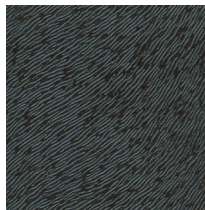
370-3156 Galacian



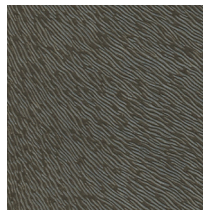
370-3155 Mustang



370-5850 Danube



370-5861 Black Forest



370-3167 Shire



370-3216 Bay

Ultraleather® | Pony

General Specifications

Composition:

100% Polycarbonate Polyurethane Surface
65% Polyester, 35% Rayon Backing

Weight:

Approx. 11.8 oz. Per Square Yard
Approx. 400 Grams Per Square Metre

Thickness:

Approx. 1.15 Millimetres

Width:

54 Inches / 137 Centimetres

Repeat:

4"V x 4"H / 102mm V x 102mm H

Performance

Abrasion:

ASTM D4157 / 400,000 Double Rubs (Wyzenbeek)*
BS EN ISO 12947-2 / 180,000 Rubs (Martindale)*
*meets or exceeds

Hydrolysis:

14+ Weeks
ASTM D3690 Sect. 6.11 (Hydrolytic Stability)
ISO 1419 Method C (Accelerated Ageing)

Adhesion of Coating: ASTM D751

Tear Strength: ASTM D2261

Breaking Strength: ASTM D5034

Tensile Strength: BS EN ISO 1421

Colorfastness

Light Fastness:

AATCC 16.3, 200 Hours, Grade 4
ISO 105 B02, Grade 6

Crocking:

AATCC 8, Grade 4-5 Wet & Dry

Flammability Requirements

- ASTM E84 (Adhered) - Class A
- CA TB 117 - Pass
- FMVSS 302 & 95/28 Annex IV - Pass
- NFPA 260 - Class 1
- UFAC - Class 1

These fabrics, when treated and/or used with other compatible furniture components, have been shown to perform under the fire test conditions of:

- ASTM E84 (Unadhered)
- BS 5852 Source 0, 1 & 5 (Cig, Match & Crib 5)
- BS 5867 Part 2 Type B
- BS 7175
- FAR Specifications
- IMO Part 8
- NFPA 701

Health Care Without Harm

Meets Health Care Without Harm's Healthy Interiors Criteria V2.3

For more information on certifications and standards, sustainability, as well as cleaning and care instructions, please visit our website.

