

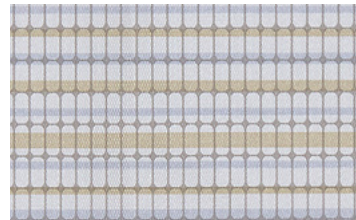


HIGH PERFORMANCE  
NON-WOVEN UPHOLSTERY 3

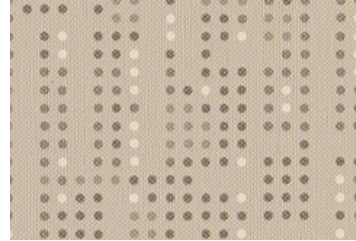
MAHARAM



Lens, 002 Plinth 



Scute, 001 Vision



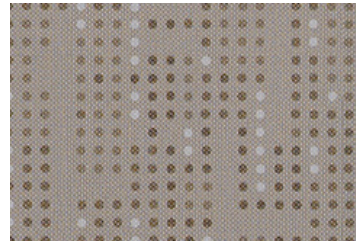
Cycle, 002 Auger 




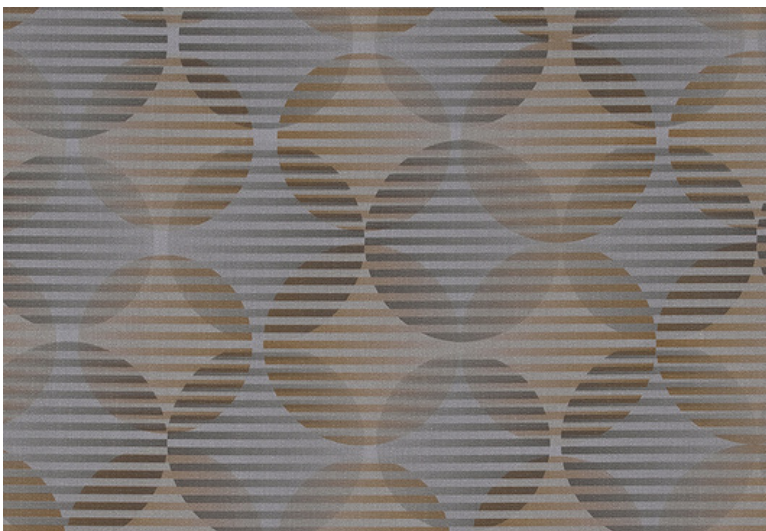
Boundary, 001 Limestone 



Sort, 005 Desert 




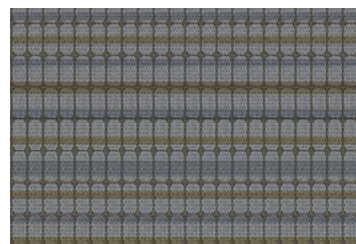
Cycle, 001 Clay 



Lens, 008 Path 



Sort, 011 Taupe 

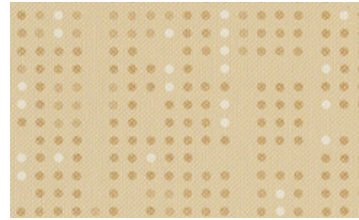


Scute, 012 Sublime

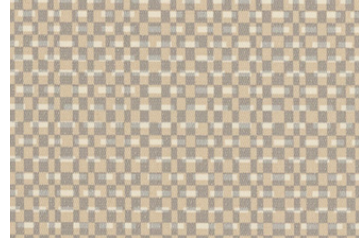




Boundary, 006 Cork QS



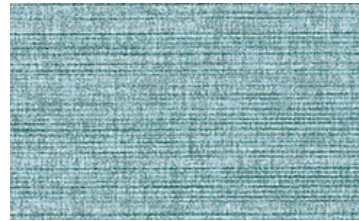
Cycle, 003 Grain QS



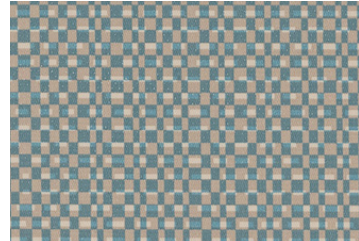
Motley, 003 Kit



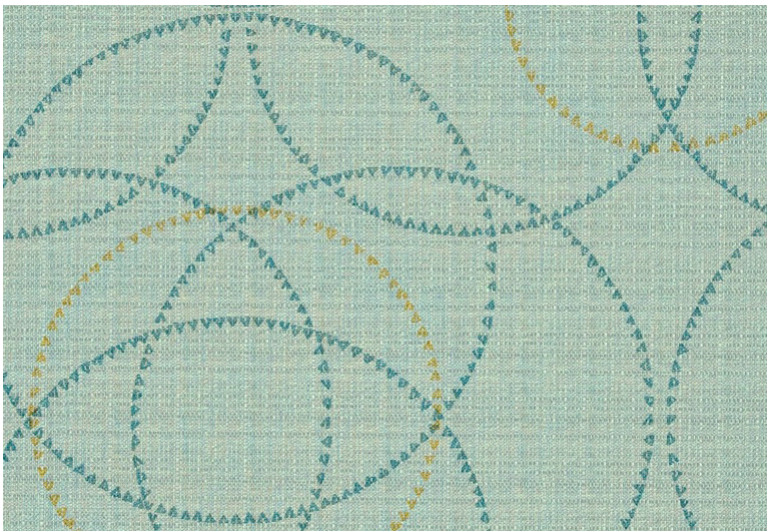
Lens, 006 Cay QS



Sort, 008 Stream QS



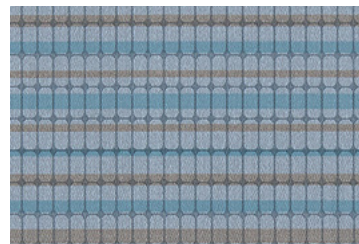
Motley, 007 Pace



Boundary, 003 Allure QS

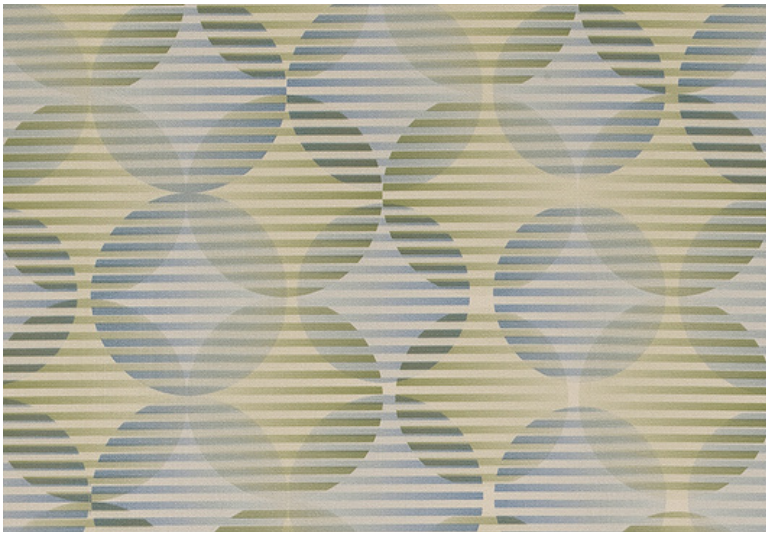


Sort, 004 Dig QS

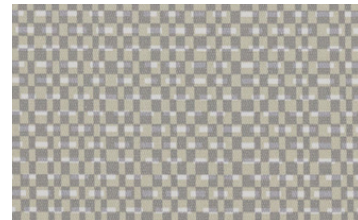


Scute, 003 Logic

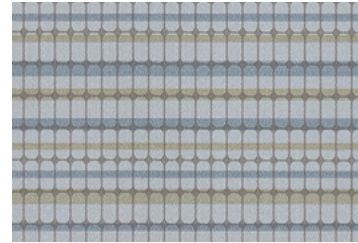




Lens, 005 Atoll QS



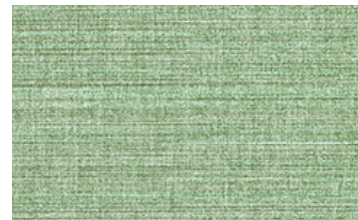
Motley, 002 Fort



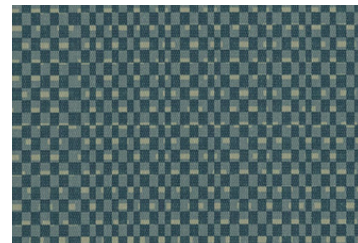
Scute, 010 Dew



Boundary, 005 Willow QS



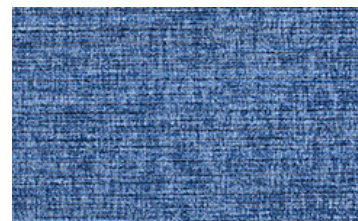
Sort, 007 Fresh QS



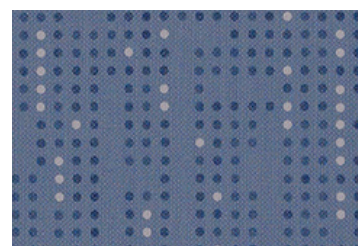
Motley, 008 Spell



Lens, 007 Depth QS



Sort, 010 Indigo QS



Cycle, 008 Found QS

## Boundary 466193

Content: 100% Vinyl  
Finish/Backing: Antimicrobial  
Protective Topcoat, Polyester  
Width: 54"  
Repeat: 8 ¾" V, 9 ¼" H  
Abrasion: 100,000 double rubs

## Cycle 466275

Content: 100% Vinyl  
Finish/Backing: Protective  
Topcoat, Polyester  
Width: 54"  
Repeat: 9" V, 8 ½" H,  
Suitable for non-match  
application  
Abrasion: 100,000 double rubs

## Lens 466323

Content: 100% Vinyl  
Finish/Backing: Antimicrobial  
Ink-Resistant Protective Topcoat,  
Polyester  
Width: 54"  
Repeat: 18" V, 18" H  
Abrasion: 100,000 double rubs

## Motley 466360

Content: 100% Vinyl  
Finish/Backing: Antimicrobial  
Ink-Resistant Protective Topcoat,  
Polyester  
Width: 54"  
Repeat: 9" V, 9" H  
Suitable for non-match  
application  
Abrasion: 100,000 double rubs

## Scute 466396

Content: 100% Vinyl  
Finish/Backing: Antimicrobial  
Ink-Resistant Protective Topcoat,  
Polyester  
Width: 54"  
Repeat: 18" V,  
Suitable for non-match  
application  
Abrasion: 100,000 double rubs

## Sort 466273

Content: 100% Vinyl  
Finish/Backing: Antimicrobial  
Protective Topcoat, Polyester  
Width: 54"  
Repeat: 17 ¾" V, 54" H,  
Suitable for non-match  
application  
Abrasion: 100,000 double rubs

## Design

Maharam Design Studio

## Flammability

These textiles meet all appropriate flammability requirements for contract use.

## Maintenance

Consult Maharam at  
800.645.3943 or visit  
maharam.com

## Quick Ship

Orders of up to 60 yards per  
Quick Ship color ship the next  
business day. 

## Samples

To order samples,  
call 800.645.3943 or  
visit maharam.com

## Environmental

These textiles offer reduced  
environmental impact (except  
Cycle).

Complete product information  
at maharam.com

© 2018 Maharam

