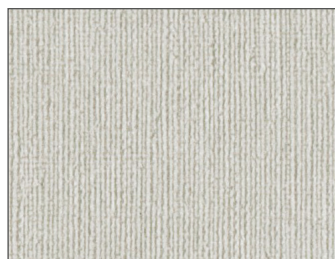


Linette



stone



platinum



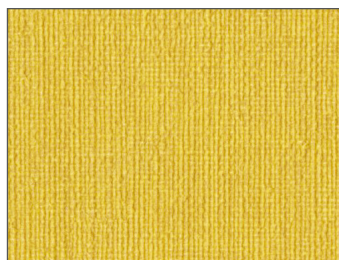
frost



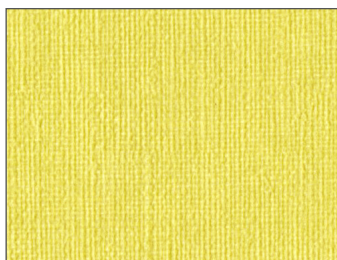
ash



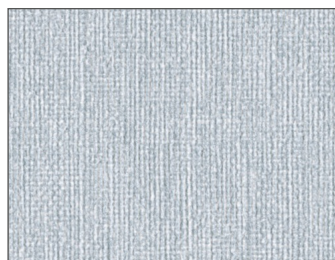
stone



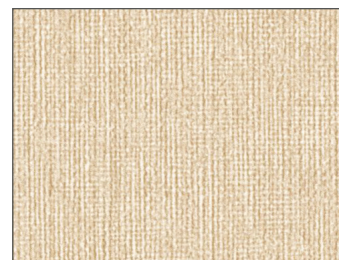
mustard



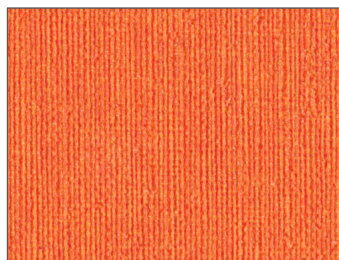
moss



glacier



glaze



flame



waterscape



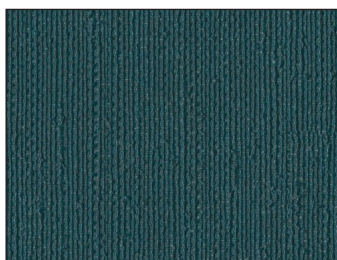
denim



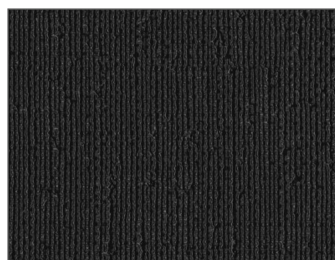
toffee



steel



peacock



black



cola

Linette

Content >	100% Vinyl
Backing >	100% Polyester
Finish >	i-clean™ - A high performance stain and moisture repellant, based on nano technology. Antimicrobial
Weight >	40.19 oz per linear yard
Width >	54"

Performance

Abrasion >	Heavy-Duty Exceeds 100,000 Cycles (Wire Screen Abradant) (ASTM D4157)
Light Fastness >	Class 4/200 hrs. min. (AATCC16A)
Color Fastness >	Class 5 (ASTM D3597, AATCC8) Wet Class 5 (ASTM D3597, AATCC8) Dry
Physical Properties >	Class 5 (ASTM D3511) Brush Pill 137 lbs warp, 143 lbs weft (ASTM D5034) Breaking Strength 88 lbs warp, 94 lbs weft (ASTM D4034) Seam Slippage 50,000 Cycles (CFFA 10) Flex Resistance Pass (CFFA 6a) Cold Crack

Flammability

Passes >	California Tech Bulletin #117-2013 UFAC Class 1 NFPA 260 Class 1 MVSS 302 Pass
----------	---

Care

Cleanability >	WS Both water and solvent-based solutions Bleach Cleanable - 5:1 water/bleach solution
----------------	---



Knú Contract | La-Z-Boy Contract Furniture
P.O. Box 9 | Ferdinand, IN 47532
812.367.2068/p | 812.367.2493/f
www.getknu.com | www.lzbcontract.com