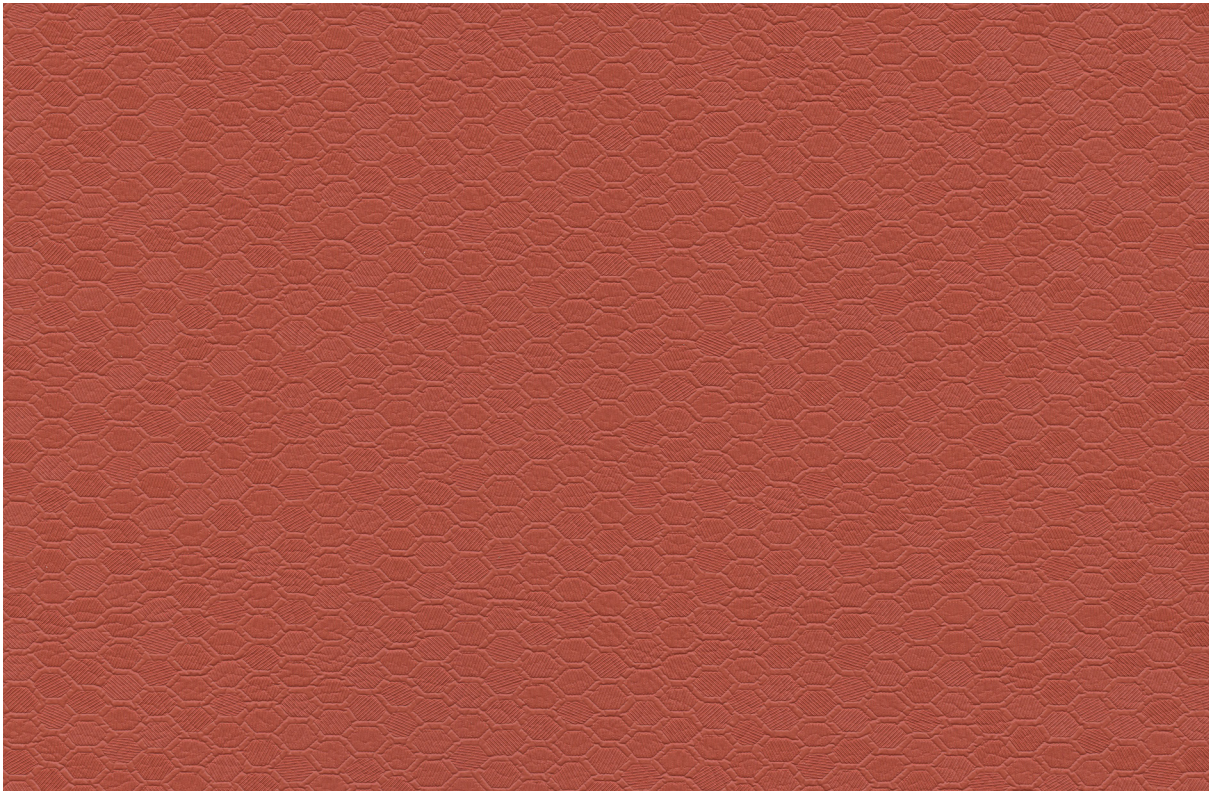




Ultratech® | Helix



581-8201 Flower Pot



581-0020 Baby Powder



581-3577 Bridge



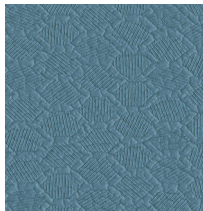
581-4391 Banana Leaf



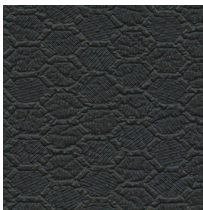
581-5938 Cathedral



581-3714 Coconut Shell



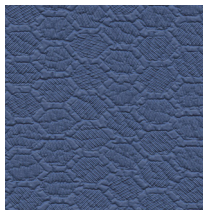
581-2533 Paradise



581-5949 Engine



581-9382 Skyscraper



581-2511 Harbor

Ultratech® | Helix

General Specifications

Composition:

100% Polycarbonate Polyurethane Surface
65% Polyester, 35% Rayon Backing

Weight:

Approx. 10.3 oz. Per Square Yard
Approx. 350 Grams Per Square Metre

Thickness:

Approx. 1.05 Millimetres

Width:

54 Inches / 137 Centimetres

Repeat:

None

Performance

Abrasion:

ASTM D4157 / 200,000 Double Rubs (Wyzenbeek)*
BS EN ISO 12947-2 / 200,000 Rubs (Martindale)*

*meets or exceeds

Hydrolysis:

14+ Weeks
ASTM D3690 Sect. 6.11 (Hydrolytic Stability)
ISO 1419 Method C (Accelerated Ageing)

Adhesion of Coating: ASTM D751

Tear Strength: ASTM D2261

Breaking Strength: ASTM D5034

Tensile Strength: BS EN ISO 1421

Colorfastness

Light Fastness:

AATCC 16.3, 200 Hours, Grade 4
ISO 105 B02, Grade 6

Crocking:

AATCC 8, Grade 4-5 Wet & Dry

Flammability Requirements

- ASTM E84 (Adhered) - Class A
- CA TB 117 - Pass
- FMVSS 302 & 95/28 Annex IV - Pass
- NFPA 260 - Class 1
- UFAC - Class 1

These fabrics, when treated and/or used with other compatible furniture components, have been shown to perform under the fire test conditions of:

- ASTM E84 (Unadhered)
- BS 5852 Source O, 1 & 5 (Cig, Match & Crib 5)
- BS 5867 Part 2 Type B
- BS 7175
- FAR Specifications
- IMO Part 8
- NFPA 701

Health Care Without Harm

Meets Health Care Without Harm's Healthy Interiors Criteria V2.3

For more information on certifications and standards, sustainability, as well as cleaning and care instructions, please visit our website.

