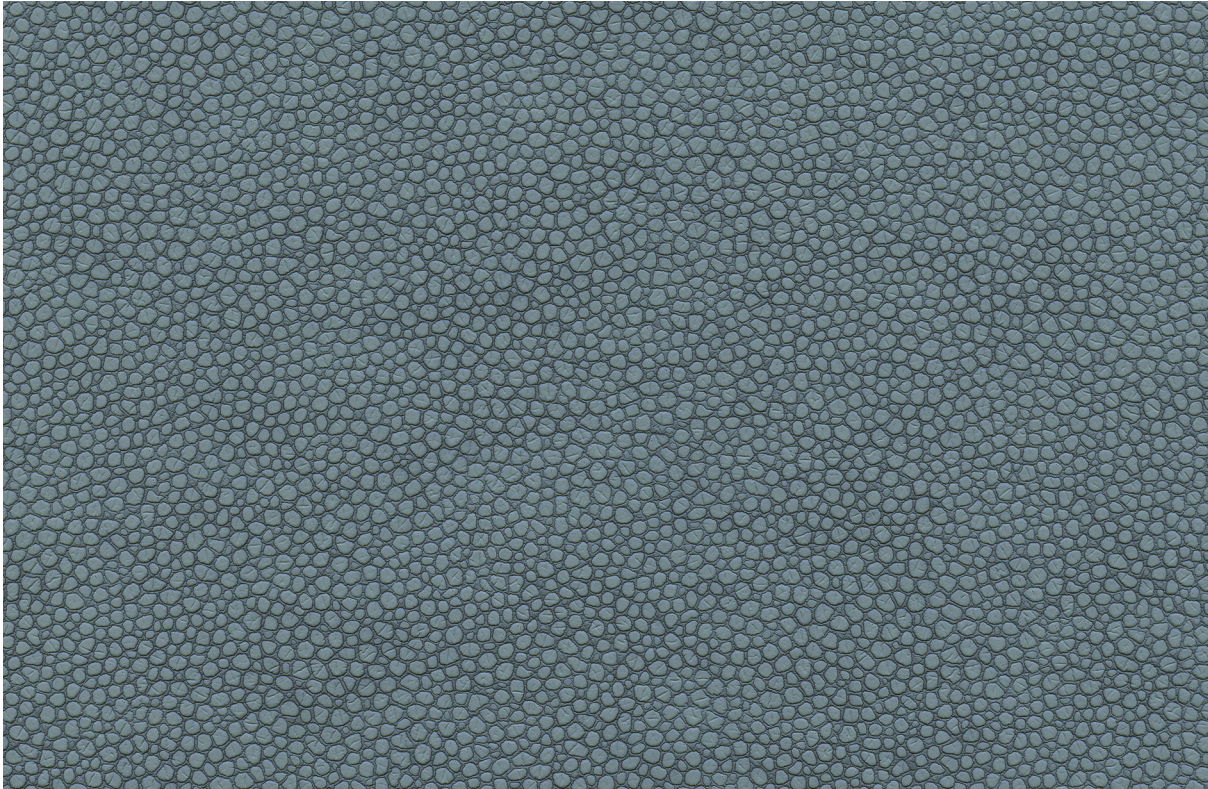




# Ultratech® | Eco Tech



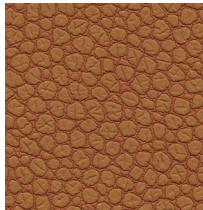
394-5757 Moonstone



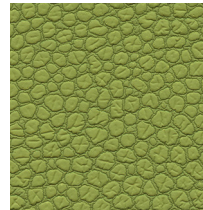
394-6540 Whisper



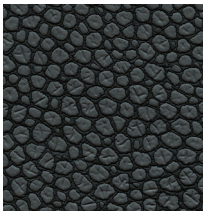
394-3801 Gypsum



394-8202 Orange Tabby



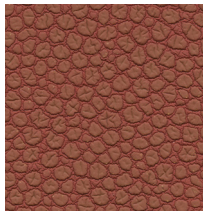
394-4431 Gecko



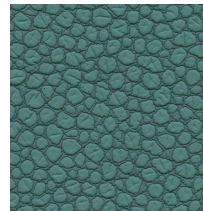
394-4408 Komodo



394-3622 Limestone



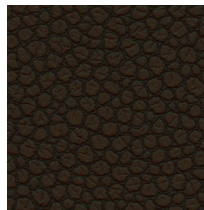
394-1369 Burnt Clay



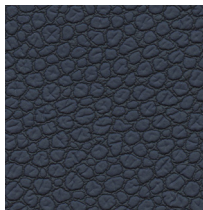
394-4531 Pacifica



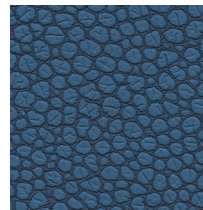
394-5777 Coal



394-3709 Brownstone



394-7243 Cadet



394-2519 Toucan Blue



# Ultratech® | Eco Tech

---

## General Specifications

### Composition:

100% Polycarbonate Polyurethane Surface  
100% Reinforced Rayon Backing

### Weight:

Approx. 10 oz. Per Square Yard  
Approx. 340 Grams Per Square Metre

### Thickness:

Approx. 1.0 Millimetres

### Width:

54 Inches / 137 Centimetres

### Repeat:

None

## Performance

### Abrasion:

ASTM D4157 / 150,000 Double Rubs (Wyzenbeek)\*  
BS EN ISO 12947-2 / 200,000 Rubs (Martindale)\*  
\*meets or exceeds

### Hydrolysis:

14+ Weeks  
ASTM D3690 Sect. 6.11 (Hydrolytic Stability)  
ISO 1419 Method C (Accelerated Ageing)

Adhesion of Coating: ASTM D751

Tear Strength: ASTM D2261

Breaking Strength: ASTM D5034

Tensile Strength: BS EN ISO 1421

## Colorfastness

### Light Fastness:

AATCC 16.3, 200 Hours, Grade 4  
ISO 105 B02, Grade 6

### Crocking:

AATCC 8, Grade 4-5 Wet & Dry

## Flammability Requirements

- ASTM E84 (Adhered) - Class A
- CA TB 117 - Pass
- FMVSS 302 & 95/28 Annex IV - Pass
- NFPA 260 - Class 1
- UFAC - Class 1

These fabrics, when treated and/or used with other compatible furniture components, have been shown to perform under the fire test conditions of:

- ASTM E84 (Unadhered)
- BS 5852 Source O, 1 & 5 (Cig, Match & Crib 5)
- BS 5867 Part 2 Type B
- BS 7175
- FAR Specifications
- IMO Part 8
- NFPA 701

## Health Care Without Harm

Meets Health Care Without Harm's Healthy Interiors Criteria V2.3

For more information on certifications and standards, sustainability, as well as cleaning and care instructions, please visit our website.

