

knú
CONTRACT

L A **Z** B O Y[®]
CONTRACT FURNITURE

Arc|Com



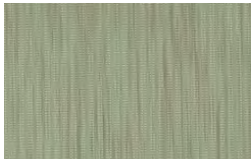
Channel
AC-61621 Beach #2



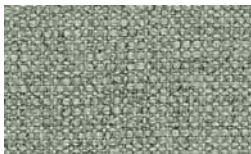
Velocity
AC-61991 Mist #12



Intaglio 2
AC-61430 Latte #41



Channel
AC-61625 Mint #6



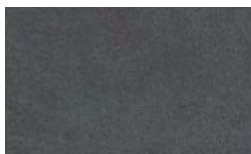
Kaolin
AC-63320 Mint #21



Intaglio
AC-69400 Seafoam #1



Mason
AC-61806 Smoke #7



Polished
AC-60753 Federal #14



Sea Willow
AC-62352 Pebble #3



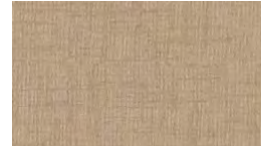
Spin
AC-61760 Primary #1



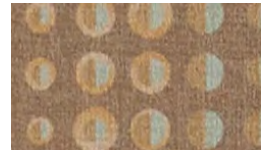
Cosmos
AC-62324 Saddle #15



Kaolin
AC-63318 Grain #19



Dynasty
AC-60522 Sand #23



Marquee
AC-62036 Butterscotch #7



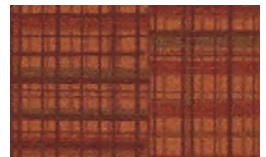
Intaglio 2
AC-61420 Tangerine #31



Palatine
AC-68453 Tangerine #4



Chroma
AC-60156 Coral #27



Velocity
AC-61984 Coral #5



Kaolin
AC-63315 Cinnamon #16



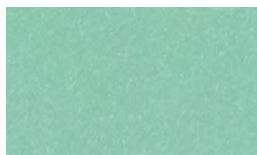
Santorini
AC-62885 Citron #6



Solitude
AC-62487 Avocado #8



Kaolin
AC-63306 Kiwi #7



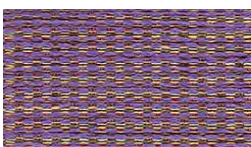
Glo
AC-62594 Seafoam #5



Channel
AC-61636 Lagoon #17



Velocity
AC-61987 Twilight #8



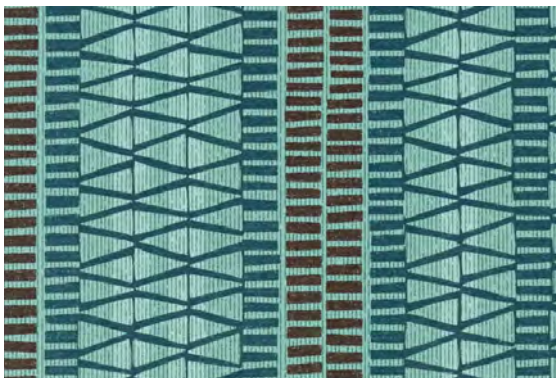
Palatine 2
AC-61222 Grape #29



Rogue
AC-62553 Truffle #14



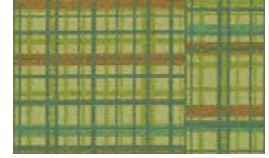
Burkina
AC-63252 Grass #3



Kuba
AC-63008 Caribbean #9



Fragment
AC-63191 Indigo #12



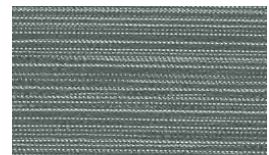
Velocity
AC-61981 Green Apple #2



Fiji
AC-62375 Spring #6



Dynasty
AC-60511 Emerald #12



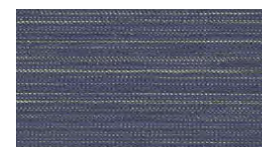
Moon Beam 2
AC-60598 Baltic #41



Sherlock 2
AC-63132 Ocean #19



Lore
AC-62479 Denim #10



Moon Beam 2
AC-60599 Blueberry #42



Sync
AC-63077 Midnight #8

Pattern	Width	Approx. Repeat	Fiber Content & Finish	Abrasion (Wyzenbeek)	Lightfastness (AATCC Method 16)	Cleaning Code
BURKINA©	55/56"	H-14½" V-14½"	83% Polyester, 17% Solution-Dyed Nylon Stain Resistant Finish/Acrylic Backing	Exceeds 125,000 D.R.	Exceeds 40 hours	WS/BC
CHANNEL	54"	H-none V-none	100% Polyurethane Face, 100% Polyester Back WriteOut® Ink Resistant Finish	Exceeds 300,000 D.R.	Exceeds 200 hours	WS/BC
CHROMA	54"	H-none V-none	90% Vinyl, 10% Urethane Face, 100% Polyester Hi-Loft™ Back SILVERGUARD®, PERMABLOK®, Stain Resistant Finish	Exceeds 300,000 D.R.	Exceeds 120 hours	WS/BC
COSMOS©	54"	H-18" V-18"	100% Vinyl Face, 100% Polyester Hi-Loft™ Back SILVERGUARD®, PBG+®PERMABLOK® PERMAGUARD®	Exceeds 300,000 D.R.	Exceeds 200 hours	WS/BC
DYNASTY	54"	H-none V-none	100% Polyurethane Face, 100% Polyester Back AEGIS, Stain Resistant Finish	Exceeds 300,000 D.R.	Exceeds 120 hours	WS/BC
FUJI	54"	H-none V-none	100% Sunbrella Solution-Dyed Acrylic Stain Resistant Finish/Acrylic Backing	Exceeds 65,000 D.R.	Exceeds 2,000 hours	WS/BC
FRAGMENT©	54"	H-10" V-10¼"	100% Polyurethane Face, 100% Polyester Back WriteOut® Ink Resistant Finish	Exceeds 300,000 D.R.	Exceeds 200 hours	WS/BC
GLO	54"	H-none V-none	100% Polyurethane Face, 100% Polyester Back AEGIS, Stain Resistant Finish	Exceeds 300,000 D.R.	Exceeds 200 hours	WS/BC
INTAGLIO & INTAGLIO 2	54"	H-none V-none	100% Polyurethane Face, 100% Polyester Knit Back AEGIS, Stain Resistant Finish	Exceeds 500,000 D.R.	Exceeds 150 hours	WS/BC
KAOLIN	54"	H-none V-none	100% Polyester INCASE™ Fabric Protection /Acrylic Backing	Exceeds 150,000 D.R.	Exceeds 40 hours	WS
KUBA©	54"	H-12½" V- 19"	100% Polyurethane Face, 100% Polyester Back Stain Resistant Finish	Exceeds 300,000 D.R.	Exceeds 200 hours	WS/BC
LORE	54"	H-none V-none	100% Polyurethane Face, 100% Polyester Back WriteOut® Ink Resistant Finish	Exceeds 300,000 D.R.	Exceeds 200 hours	WS/BC
MARQUEE©	54"	H-5¼" V-6¾"	100% Vinyl Face, 100% Polyester Hi-Loft™ Back SILVERGUARD®, Stain Resistant Finish	Exceeds 300,000 D.R.	Exceeds 150 hours	WS/BC
MASON©	54"	H-8¼" V-8¼"	100% Vinyl Face, 100% Polyester Hi-Loft™ Back SILVERGUARD®, Stain Resistant Finish	Exceeds 300,000 D.R.	Exceeds 150 hours	WS/BC
MOON BEAM 2	54"	H-none V-none	61% Polyester, 27% Cotton, 11% Rayon, 1% Nylon CRYPTON® Stain Resistant Finish	Exceeds 150,000 D.R.	Exceeds 40 hours	WS
PALATINE & PALATINE 2	54/55"	H-none V-none	65% Polyester, 35% Rayon CRYPTON® Stain Resistant Finish	Exceeds 150,000 D.R.	Exceeds 40 hours	WS
POLISHED	54"	V-none H-none	100% Polyurethane Face, 100% Polyester Back AEGIS, Stain Resistant Finish	Exceeds 300,000 D.R.	Exceeds 120 hours	WS/BC
ROGUE	54"	H-none V-none	48% Polyester, 33% Post Industrial Recycled Polyester, 19% Post Consumer Recycled Polyester CRYPTON® <i>green</i> Stain Resistant Finish	Exceeds 150,000 D.R.	Exceeds 40 hours	WS/BC
SANTORINI	54"	H-none V-none	100% Silicone Face, 100% Polyester Back	Exceeds 200,000 D.R.	Exceeds 1,000 hours	WS/BC
SEA WILLOW©	54"	H-27" V-20"	100% Vinyl Face, 100% Polyester Hi-Loft™ Back SILVERGUARD®, Stain Resistant Finish	Exceeds 300,000 D.R.	Exceeds 200 hours	WS/BC
SHERLOCK 2	54"	H-none V-none	73% Polyester, 27% Viscose alta performance technology/Acrylic Backing	Exceeds 150,000 D.R.	Exceeds 40 hours	WS
SOLITUDE	54"	H-none V-none	100% Polyurethane Face, 100% Polyester Back WriteOut® Ink Resistant Finish	Exceeds 300,000 D.R.	Exceeds 200 hours	WS/BC
SPIN©	54"	H-10¾" V-10¾"	100% Vinyl Face, 100% Polyester Hi-Loft™ Back SILVERGUARD®, Stain Resistant Finish	Exceeds 300,000 D.R.	Exceeds 150 hours	WS/BC
SYNC	54"	H-none V-none	98% Sunbrella Solution-Dyed Acrylic, 2% Polyester Stain Resistant Finish/Acrylic Backing	Exceeds 100,000 D.R.	Exceeds 2,000 hours	WS/BC
VELOCITY©	54"	H-18" V-20"	100% Vinyl Face, 100% Polyester Hi-Loft™ Back SILVERGUARD®, Stain Resistant Finish	Exceeds 300,000 D.R.	Exceeds 150 hours	WS/BC

Cleaning Codes:

WS - Water based cleaning agents and foam may be used.

BC - May be cleaned with bleach following the proper ratio of water and bleach.

Cleaning by a professional service is recommended.

This card represents only a select sampling of the ArcCom fabrics available.

See ArcCom Textile samples for specific technical data.



Multiple factors affect fabric durability and appearance retention, including end-user application and proper maintenance.

Wyzenbeek results above 100,000 double rubs have not been shown to be an indicator of increased lifespan.

For the complete selection of patterns and colorways and/or samples of our specific fabrics visit our website at arc-com.com.



P.O. Box 9 Ferdinand, IN 47532

Tel: 812.367.2068 | Fax: 812.367.2493

lzbcontract.com | getknu.com